

THE UNDERRATED DISPATCH

MONTHLY STRATEGIES FOR THE UNDERDOG CLINICIAN

THIS MONTH'S FEATURE

THE PLATFORM GOT SIMPLER.
YOUR ACCESS GOT BETTER.

A cleaner platform. Less gatekeeping. More of what you actually came for.

I looked at what people actually use and built around that. One paid membership tier. Full access to the Resource Library. No more wondering which tier unlocks which thing.

In the spirit of transparency: CE courses, forums, points and gamification, and quarterly kit subscriptions have been removed. What stayed is what people actually come back for — clinical tools, documentation resources, and honest content about this work.

The Resource Library is the most underutilized part of this platform. That's the part I'm most excited about you having full access to.

[EXPLORE THE NEW MEMBERSHIP](#)

BONUS SPECIAL: JUSTICE-INVOLVED SERIES. THE FINALE IS HERE

Article 8 — Ethics in Justice-Involved Treatment: When Systems Collide — drops May 10th. The complete series download available May 31st. Toolkit will be free for all subscribers.

QUICK WIN TOOL OF THE MONTH

Interactive Treatment Placement Decision Module

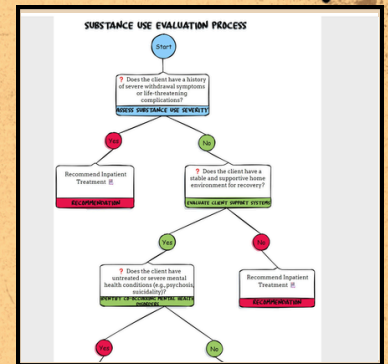
Inpatient or outpatient?

This guided module walks you through the clinical factors that matter — substance use severity, support systems, co-occurring mental health conditions, and relapse history. Includes the full Substance Use Evaluation Process flowchart.

Free for all subscribers.

IMPLEMENTATION NOTES

The decision module works best as a quick pre-session reference. Mental Health Awareness Month is a good time to revisit how often co-occurring mental health factors are driving placement decisions that look like pure SUD cases.



[ACCESS THE MODULE](#)

MAY MISSION UPDATES

- **New Platform Launch (5/1)** — Simplified membership goes live
- **Mastery Series (5/10)** — Article 8: Ethics in Justice-Involved Treatment
- **Monthly Content Drop (5/15)**
- **New Clinician Series Releases (5/3; 5/10; 5/17; 5/24; 5/31)**
- **Full Series Download (5/31)** — Complete Justice-Involved toolkit
- **Mental Health Awareness Month** — All of May

Underrated Tactic: THE PLACEMENT CONVERSATION

HAVE IT BEFORE YOU NEED IT

Most clinicians avoid the level of care conversation until it's urgent. By then the client is in crisis and you're making recommendations under pressure.

Have the conversation early. Walk through the decision tree together in the first few sessions — not as a threat, as a map. When clients understand the process before a crisis, they're more likely to accept a higher level of care recommendation when the time comes

PAIRS PERFECTLY WITH THIS MONTH'S QUICK WIN: THE TREATMENT PLACEMENT MODULE